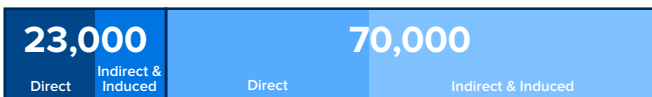


Economic and Social Impacts of Veterinary Medicine in Ohio

A Study Commissioned by a Partnership Between
The Ohio State University College of Veterinary Medicine and the Ohio Veterinary Medical Association

93,000

Ohio Jobs Supported in 2015



Veterinary Services

Supporting & Animal-related Industries

\$3.7 billion

Ohio Wages Supported in 2015

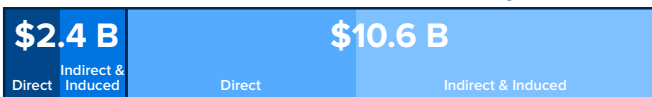


Veterinary Services

Supporting & Animal-related Industries

\$13 billion

Contribution to the Ohio Economy in 2015

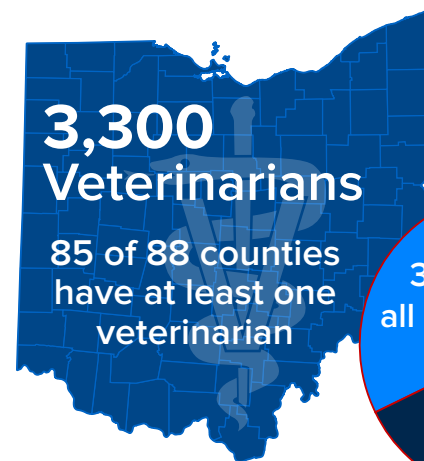


Veterinary Services

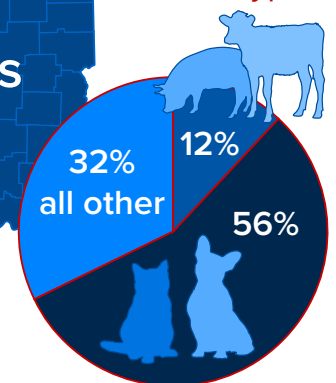
Supporting & Animal-related Industries



Veterinary Medicine Helps Protect & Support Ohio's \$110B Agriculture Industry

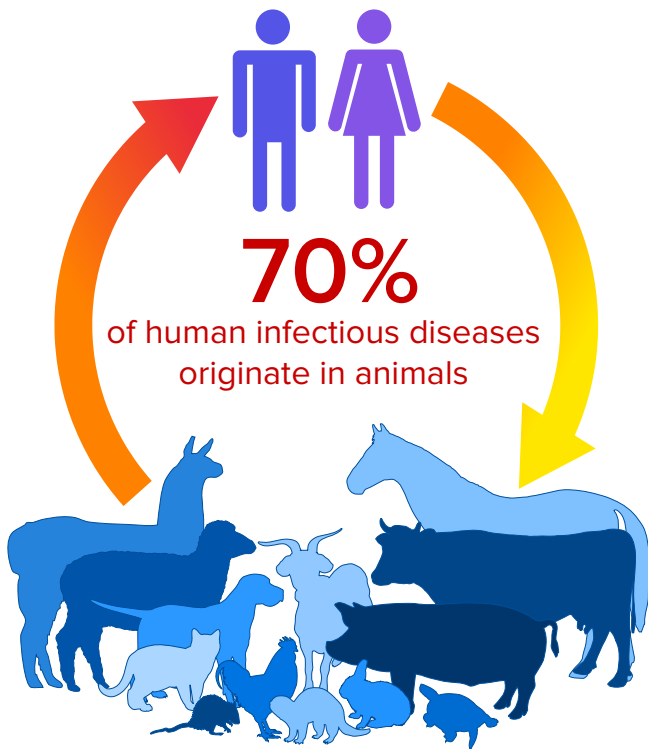


Practice Types

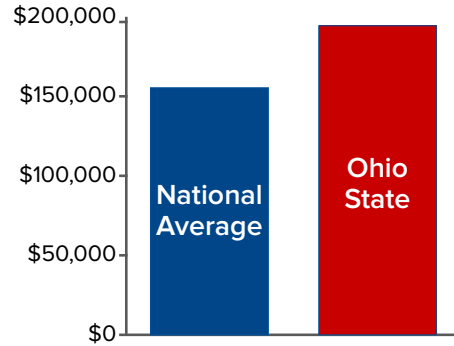




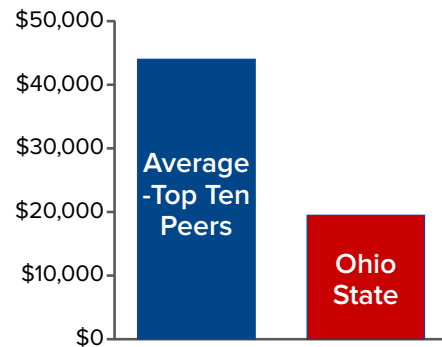
Pets make substantial contributions to the health and well-being of pet owners.



Ohio State 2016 graduates average debt is **25% higher** than the national average.



State support per student at Ohio State is **less than half** the average of its top ten peer institutions.



The Ohio State University College of Veterinary Medicine

- Robust Research
- Translational Medicine



Veterinary Medical Center

- One of the largest in the U.S.
- 42,000 patients annually
- Comprehensive referral for three states