



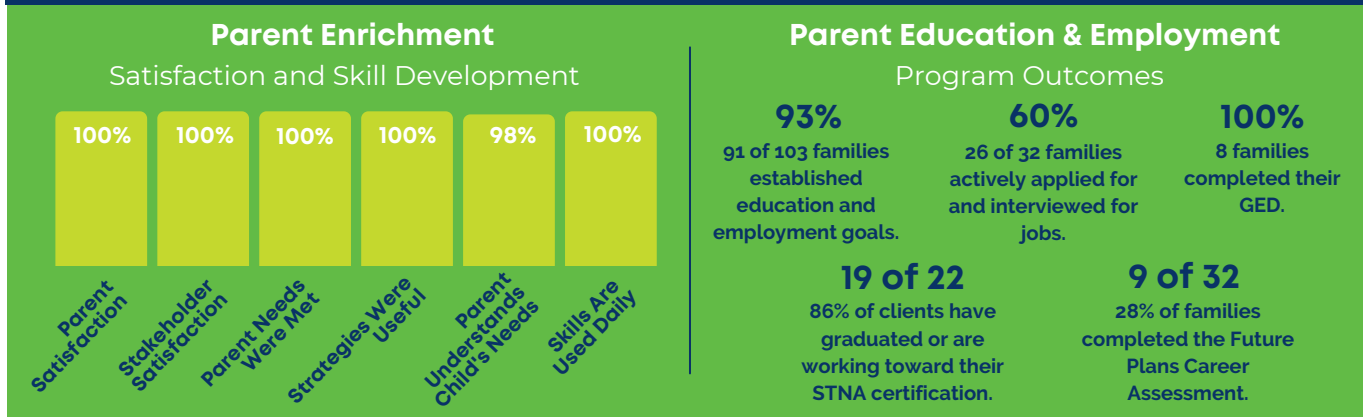
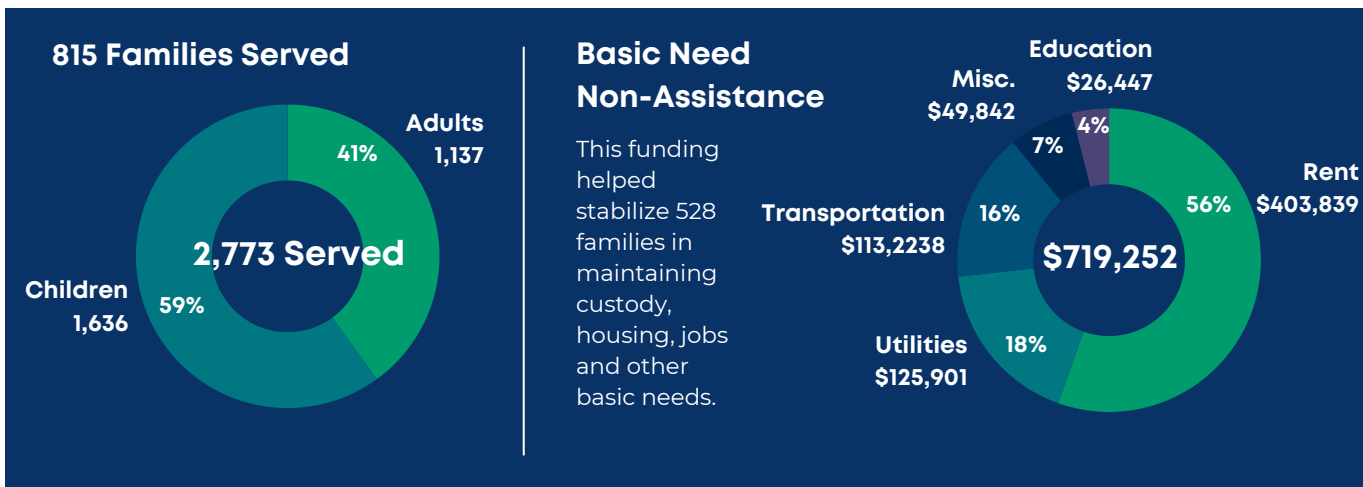
Strong Families served 815 families through Parent Enrichment (161), PEEP Education and Employment (103), Before and After School (23) and Non-Assistance (528) services.



Strong Families parents and children served were residents in **Clermont, Brown, Adams, Highland and Hamilton** Counties.



Five hundred twenty-eight **(528) families received \$719,252 in Non-Assistance** to help with basic needs including rent, utilities and transportation.



Feedback from the Community



"I have first-hand witnessed this program change families lives with some changing dramatically."



"This service is amazingly helpful."

"Your support has helped maintain so many children in our homes and has helped many children reunify or find permanency."

"In home parenting is a fantastic service that helps our families who struggle with transportation."