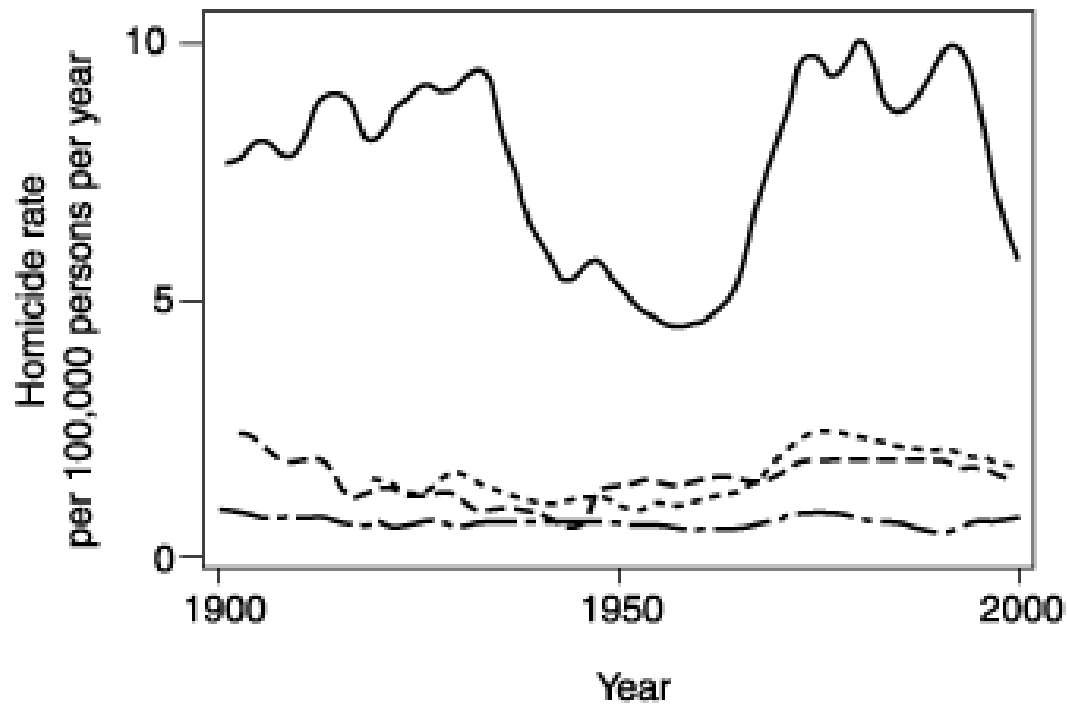


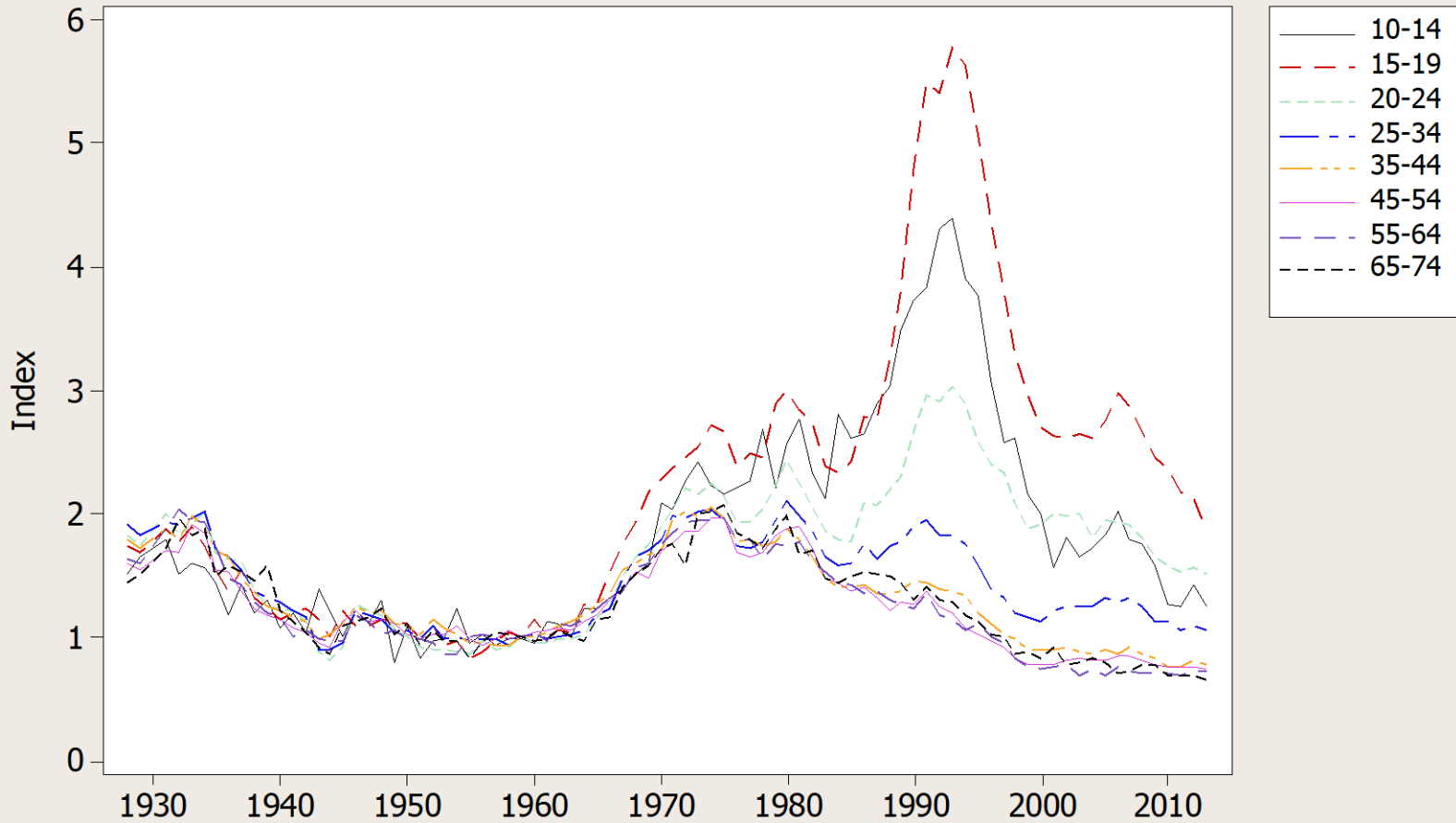
Homicide Rates in Industrial Democracies, 1900-2000



- United States
- Canada
- - - Australia
- . - England and Wales

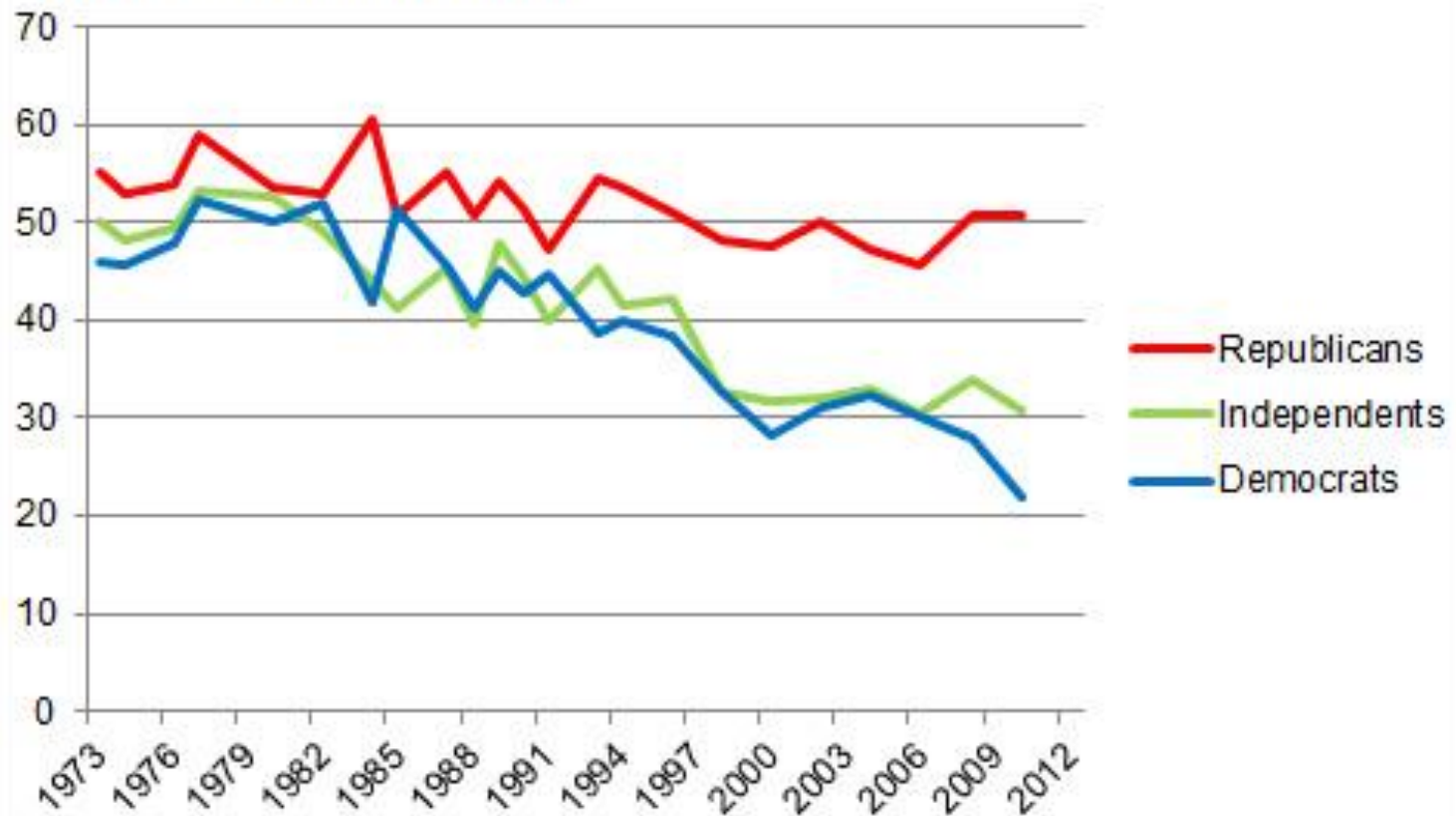
Source: Archer and Gartner (1984) and the World Health Organization.

Homicide Rates in the United States, 1928-2013 by Age Groups (Index: 1959 = 1)



Household Gun Ownership Rates by Party

General Social Survey, 1973-2010



The Correlates of Low Homicide Rates among Unrelated Adults

Political stability: The belief that government is stable and that its legal and judicial institutions are unbiased and will redress wrongs and protect lives and property.

A legitimate government: A feeling of confidence in government and the officials who run it, and a belief in their legitimacy.

Fellow feeling, empathy: A feeling of patriotism, empathy, and kinship with other members of society arising from racial, religious, or political solidarity.

A legitimate status hierarchy: The belief that the social hierarchy is legitimate, that one's position in society is or can be satisfactory and that one can command the respect of others without resorting to violence.

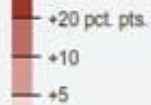
Note: These are the elements of *successful nation building*.

This year, only 22 percent of the nation's counties voted more Republican ...

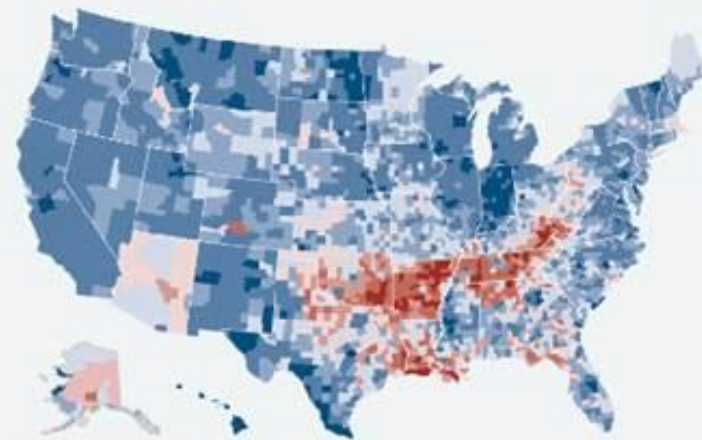


Compared to 2004, each county voted more ...

Republican

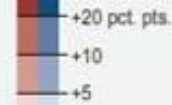


... while the rest of the nation shifted more Democratic.



Compared to 2004, each county voted more ...

R Democratic



Results as of 9 AM

Normalized County Homicides by County-level 2004 to 2008 Increase in Republican Vote

